

650 and 750 Tractors



TECHNICAL MANUAL

650 and 750 Tractors

TM1242 (01SEP84) English

John Deere
Lawn & Grounds Care Division
TM1242 (01SEP84)

LITHO IN U.S.A.
ENGLISH



650 AND 750 TRACTORS TECHNICAL MANUAL TM-1242 (MAR-81)

CONTENTS—REPAIR SECTIONS

SECTION 10—GENERAL

- Group 00—Specifications and Special Tools
- Group 05—Predelivery, Delivery and After-Sale Services
- Group 10—Tune-Up
- Group 15—Lubrication
- Group 20—650 Separation
- Group 25—750 Separation

SECTION 20—ENGINE REPAIR

- Group 00—Specifications and Special Tools
- Group 05—Valve Train, Cylinder Head and Camshaft
- Group 10—Pistons, Rods, and Cylinder Blocks
- Group 15—Flywheel, Crankshaft, and Main Bearings
- Group 20—Lubrication System
- Group 25—Cooling System

SECTION 30—FUEL AND REPAIR

- Group 00—Specifications and Special Tools
- Group 05—Air Intake System
- Group 10—Diesel Fuel System
- Group 15—Speed Control Linkage

SECTION 40—ELECTRICAL REPAIR

- Group 00—Specifications and Special Tools
- Group 05—General Information
- Group 10—Charging System
- Group 15—Starting Motor
- Group 20—Instruments and Accessory Circuits
- Group 25—Lighting Circuits

SECTION 50—650 POWER TRAIN REPAIR

- Group 00—Specifications and Special Tools
- Group 05—Engine Clutch and Linkage

- Group 10—Sliding Gear Transmission
- Group 15—Rear PTO
- Group 20—Differential
- Group 25—Final Drive
- Group 30—Mechanical Front-Wheel Drive
- Group 35—Front PTO

SECTION 55—750 POWER TRAIN REPAIR

- Group 00—Specifications and Special Tools
- Group 05—Engine Clutch and Linkage
- Group 10—Sliding Gear Transmission
- Group 15—Rear PTO
- Group 20—Differential
- Group 25—Final Drive
- Group 30—Mechanical Front-Wheel Drive
- Group 35 Front PTO

SECTION 60—STEERING/BRAKES REPAIR

- Group 00—Specifications and Special Tools
- Group 05—Steering Gear Repair
- Group 10—Power Steering Repair (Field Option)
- Group 15—Brakes Repair

SECTION 70—HYDRAULIC REPAIR

- Group 00—Specifications and Special Tools
- Group 05—Hydraulic Pump Repair
- Group 10—Rockshaft and Implement Hitches
- Group 15—Selective Control Valve Repair

SECTION 80—MISCELLANEOUS REPAIR

- Group 00—Specifications and Special Tools
- Group 05—Front Axle Assembly
- Group 10—Wheels
- Group 15—Operators Station Repair

All information, illustrations and specifications contained in this technical manual are based on the latest information available at the time of publication. The right is reserved to make changes at any time without notice.

COPYRIGHT® 1981
DEERE & COMPANY
Moline, Illinois
All rights reserved
A JOHN DEERE ILLUSTRATION

**Thanks very much for your reading,
Want to get more information,
Please click here, Then get the complete
manual**

JustClickHere 

NOTE:

**If there is no response to click on the link above,
please download the PDF document first, and then
click on it.**

**Have any questions please write to me:
admin@servicemanualperfect.com**

CONTENTS—OPERATION AND TEST SECTIONS

SECTION 220—ENGINE OPERATION AND TESTS

- Group 00—Specifications and Special Tools
- Group 05—System Operation
- Group 10—System Tests and Diagnosis

SECTION 230—FUEL/AIR OPERATION AND TESTS

- Group 00—Specifications and Special Tools
- Group 05—Air Intake System
- Group 10—Diesel Fuel System
- Group 15—Speed Control Linkage

SECTION 240 ELECTRICAL OPERATION

- Group 00—Specifications and Special Tools
- Group 05—General Information and Diagrams
- Group 10—Charging System
- Group 15—Starting Circuit
- Group 20—Instruments and Accessory Circuits
- Group 25—Lighting Circuits

SECTION 250—650 POWER TRAIN OPERATION AND TESTS

- Group 00—Specifications and Special Tools
- Group 05—Clutch and Transmission Operation
- Group 10—Diagnosing the Clutch, Transmission and Front-Wheel Drive
- Group 15—Differential and Final Drive
- Group 20—Mechanical Front-Wheel Drive Operation

SECTION 255—750 POWER TRAIN OPERATION AND TESTS

- Group 00—Specifications and Special Tools
- Group 05—Clutch and Transmission Operation
- Group 10—Diagnosing the Transmission, and Front-Wheel Drive
- Group 15—Differential and Final Drive
- Group 20—Mechanical Front-Wheel Drive Operation

SECTION 260—STEERING/BRAKES OPERATION AND TEST

- Group 00—Specifications and Special Tools
- Group 05—Manual Steering
- Group 10—Power Steering
- Group 15—Brakes

SECTION 270—HYDRAULIC OPERATION AND TESTS

- Group 00—Specifications and Special Tools
- Group 05—Hydraulic System Operation
- Group 10—Hydraulic System Tests and Diagnosis
- Group 15—Hydraulic Pump
- Group 20—Rockshaft and Implement
- Group 30—Selective Control Valve



This tractor is of metric design. All hardware is therefore metric. Make sure you use the specified metric hardware when replacement becomes necessary. For your convenience most specifications are given in metric measurement with customary U.S. measurement following.

All information, illustrations and specifications contained in this technical manual are based on the latest information available at the time of publication. The right is reserved to make changes at any time without notice.

Section 10 GENERAL

CONTENTS

GROUP 00 - SPECIFICATIONS AND SPECIAL TOOLS

General Tractor Specifications	10-00-1
Predelivery	10-00-3
Tune-Up	10-00-4
Lubrication	10-00-4
Separation	10-00-5
Special Tools	10-00-5

GROUP 05 - PREDELIVERY, DELIVERY AND AFTER-SALE SERVICES

Predelivery Service-General Information	10-05-1
Lubricate Grease Fittings	10-05-2
Align Muffler	10-05-3
Adjust All Lamps	10-05-4
Torque Wheel Hardware	10-05-4
Check Tire Pressures	10-05-5
Adjust Wheel Spacing-Front Tread	10-05-5
Adjust Wheel Spacing-Rear Tread	10-05-5
Adjust Front Wheel Toe-In	10-05-6
Adjust 650 Tractor Toe-In	10-05-6
Adjust 750 Tractor Toe-In	10-05-6
Engine Break-In	10-05-6
Verify Predelivery Service	10-05-7
Delivery Service	10-05-12
After-Sale Inspection	10-05-13

GROUP 10 - TUNE-UP

Preliminary Engine Tests	10-10-1
Remove and Inspect Air Cleaner Element	10-10-1
Clean Filter Element	10-10-2
Tighten Air Intake Connections	10-10-3
Clean Crankcase Breather System	10-10-3
Clean Radiator Screen	10-10-3
Test Cooling System	10-10-3
Flush Cooling System	10-10-4
Check and Adjust Fan Belt Tension	10-10-4
Clean Fuel Filter	10-10-5
Clean and Adjust Injection Pump Timing	10-10-5
Check and Adjust Fast Idle Speed	10-10-9

Clean and Test Battery	10-10-10
Make Final Engine Test	10-10-11
Check Toe-In	10-10-11
Miscellaneous	10-10-12

GROUP 15 - LUBRICATION

Lubricate Tractor Properly	10-15-1
Use Correct Engine Oil	10-15-1
Use Correct Transmission-Hydraulic Oil	10-15-2
Use Correct Grease	10-15-2
Use Approved Alternative Lubricants	10-15-3
Store Lubricants Correctly	10-15-3
Lubrication Services (Chart)	10-15-4
Check Engine Oil Level	10-15-5
Change Engine Oil and Oil Filter	10-15-5
Clean Crankcase Vent System	10-15-5
Check Transmission-Hydraulic Oil Level	10-15-6
Change Transmission-Hydraulic System Oil	10-15-6
Service Transmission-Hydraulic Filter Screen	10-15-7
Replace Transmission-Hydraulic Oil Filter	10-15-7
Check Front Axle Oil Level (MFWD Tractors Only)	10-15-8
Change Front Axle Oil (MFWD Tractors Only)	10-15-8
Repack Front Wheel Bearings (650 Without MFWD)	10-15-9
Repack Front Wheel Bearings (750 Without MFWD)	10-15-10
Lubricate Steering Linkage	10-15-10
Lubricate Front Axle Pivot (Tractors Without MFWD)	10-15-11
Lubricate Steering Spindles (Tractors Without MFWD)	10-15-11
Lubricate Steering Spindles (650 With MFWD)	10-15-11
Lubricate Clutch and Brake Pedal Pivots	10-15-11
Lubricate 3-Point Hitch	10-15-12
Lubricate Front PTO Shaft Bearing	10-15-12

Continued

D1000N A 080181

CONTENTS—Continued

GROUP 20 - SEPARATION

Remove Front End10-20-1
Install Front End10-20-4
Remove Engine10-20-5
Install Engine10-20-7
Remove Front End From Clutch
Housing10-20-8
Install Front End To Clutch Housing10-20-11
Remove Clutch Housing From
Transmission10-20-12
Install Clutch Housing To
Transmission10-20-14
Mount Transmission Stand10-20-15
Remove Axle10-20-16
Install Axle10-20-19

GROUP 25 - 750 SEPARATION

Remove Front End10-25-1
Install Front End10-25-3
Remove Front End From Clutch
Housing10-25-4
Install Front End To Clutch Housing10-25-7
Remove Engine10-25-8
Install Engine10-25-11
Remove Clutch Housing From
Transmission10-25-12
Install Clutch Housing To
Transmission10-25-14
Remove Transmission From
Differential10-25-15
Install Transmission To Differential10-25-17
Mount Transmission Stand10-25-18
Remove Axle10-25-21
Install Axle10-25-23

Group 00
SPECIFICATIONS AND SPECIAL TOOLS

GENERAL TRACTOR SPECIFICATIONS

	650 TRACTOR	750 TRACTOR
HORSEPOWER (Official PTO horsepower)	10.8 kW (14.5 hp) at 2600 rpm	13.4 kW (18.0 hp) at 2400 rpm
ENGINE:		
Type	2-cylinder, in line, valve-in-head, diesel	3-cylinder, in-line, valve-in-head, diesel
Slow idle speed	800 rpm	800 rpm
Working speed range	1825 to 2600 rpm	1650 to 2400 rpm
Bore and stroke	80 x 85 mm (3.15 x 3.35 in.)	80 x 85 mm (3.15 x 3.35 in.)
Displacement	0.9 L (52.0 cu. in.)	1.3 L (78.0 cu. in.)
Compression ratio	22.5 to 1	22.5 to 1
Firing order (No. 1 in rear)	1-2	1-3-2
Valve clearance		
Intake	0.2 mm (0.008 in.)	0.15 mm (0.006 in.)
Exhaust	0.20 mm (0.008 in.)	0.15 mm (0.006 in.)
Injection pump timing	22°BTDC	22°BTDC
Lubrication system	force-feed, pressurized with full-flow filter	force-feed, pressurized with full-flow filter
FUEL SYSTEM:		
Type	precombustion chamber	precombustion chamber
Injection pump type	plunger	plunger
Air cleaner	dry type	dry type
COOLING SYSTEM:		
Type	pressurized with centrifugal pump	pressurized with centrifugal pump
Temperature control	heavy duty thermostat	heavy duty thermostat
CAPACITIES		
Fuel tank	23.5 L (6.2 U.S. gal.)	23.5 L (6.2 U.S. gal.)
Cooling system	3.5 L (3.7 U.S. qt.)	4.2 L (4.4 U.S. qt.)
Crankcase (with filter change)	2.5 L (2.6 U.S. qt.)	4.0 L (4.2 U.S. qt.)
Transmission-hydraulic system	13 L (14 U.S. qt.)	14 L (15 U.S. qt.)
Front-wheel drive axle housing	3.0 L (3.2 U.S. qt.)	6.5 L (6.9 U.S. qt.)
TRANSMISSION:		
Type	2-speed range selector and 4-speed gear selector	2-speed range selector and 4-speed gear selector
Gear selections	8 forward and 2 reverse	8 forward and 2 reverse
Clutch	single-disk, dry	single-disk, dry
POWER TAKE-OFF:		
Type	transmission driven, with overrunning clutch	transmission driven, with overrunning clutch
PTO Speed (engine speed)	540 rpm (2350 rpm)	540 rpm (2300 rpm)
Size	35 mm (1-3/8 in.)	35 mm (1-3/8 in.)
Clutch	uses transmission clutch	uses transmission clutch

Continued

01000 A 090181

GENERAL TRACTOR SPECIFICATIONS—Continued

	650 TRACTOR	750 TRACTOR
HYDRAULIC SYSTEM:		
Type	open center, constant flow	open center, constant flow
Working pressure	13790 kPa (138 bar) (2000 psi)	13790 kPa (138 bar) (2000 psi)
Pump	gear pump, driven by engine	gear pump, driven by engine
BRAKES		
Type	mechanical dry, internal expanding shoe	mechanical dry, internal expanding shoe
ELECTRICAL SYSTEM:		
Type	12-volt, negative ground	12-volt, negative ground
Battery	one, 12-volt, BCI group, 24 370 amps cold cranking, 106 minutes reserve capacity	one, 12-volt, BCI group, 24 370 amps cold cranking, 106 minutes reserve capacity
Alternator	15-amp	15-amp
TIRES AND TREADS:	See page 10-05-5	See page 10-05-5
DIMENSIONS:		
Wheelbase	1425 mm (56 in.)	1550 mm (61 in.)
Overall length	2606 mm (102.5 in.)	2845 mm (112.0 in.)
Height to muffler top*	1965 mm (77.4 in.)	2004 mm (78.9 in.)
Height to top of ROLL-GARD frame*	1865 mm (73.4 in.)	1904 mm (75.0 in.)
Overall width	1041 mm (41.0 in.)	1132 mm (44.6 in.)
Turning radius with brakes	1.9 m (6.2 ft.)	2.2 m (7.2 ft.)
SHIPPING WEIGHT**		
Tractor without MFWD	645 kg (1450 lbs.)	770 kg (1700 lbs.)
Tractor with MFWD	695 kg (1530 lbs.)	860 kg (1896 lbs.)

*650 Tractor equipped with 9.5-16 rear tires and 5.00-12 front tires. 750 Tractor equipped with 9.5-24 rear tires and 4.00-15 front tires.

**Equipped for average field service, without fuel and ballast.

DETERMINING 650 TRACTOR TRAVEL SPEED

Travel speeds shown are for tractor with 9.5-16 rear tires.

Due to difference in tire radius, all speeds would be six percent faster with 31/15.50-15 rear tires.

650 TRACTOR TRAVEL SPEEDS				
Range	Gear	Lowest Working Speed	Standard PTO Speed	Rated Engine Speed
		(1825 rpm) km/h (mph)	(2350 rpm) km/h (mph)	(2600 rpm) km/h (mph)
L	1	0.9 (0.6)	1.1 (0.7)	1.1 (0.7)
	2	1.1 (0.7)	1.4 (0.9)	1.6 (1.0)
	3	1.6 (1.0)	2.1 (1.3)	2.3 (1.4)
	4	2.6 (1.6)	3.4 (2.1)	3.8 (2.3)
H	5	3.6 (2.2)	4.7 (2.9)	5.2 (3.2)
	6	5.0 (3.1)	6.5 (4.0)	7.2 (4.5)
	7	7.1 (4.4)	9.1 (5.7)	10.1 (6.3)
	8	11.6 (7.2)	15.0 (9.3)	16.6 (10.3)
R	1	0.8 (0.5)	1.0 (0.6)	1.1 (0.7)
	2	1.1 (0.7)	1.4 (2.7)	4.9 (3.1)

©1980 B 080181

DETERMINING 750 TRACTOR TRAVEL SPEEDS

Travel speeds shown are for tractor with 9.5-24 rear tires.

Due to difference in tire radius, all speeds would be eight percent faster with 13.6-16 rear tires.

750 TRACTOR TRAVEL SPEEDS

Range	Gear	Lowest Working Speed (1650 rpm) km/h (mph)	Standard PTO Speed (2300 rpm) km/h (mph)	Rated Engine Speed (2400 rpm) km/h (mph)
L	1	0.9 (0.6)	1.3 (0.8)	1.3 (0.8)
	2	1.1 (0.7)	1.6 (1.0)	1.8 (1.1)
	3	1.8 (1.1)	2.5 (1.5)	2.6 (1.6)
	4	2.8 (1.7)	4.0 (2.5)	4.2 (2.6)
H	5	3.9 (2.4)	5.6 (3.5)	5.8 (3.6)
	6	5.2 (3.2)	7.4 (4.6)	7.7 (4.8)
	7	7.6 (4.7)	10.8 (6.7)	11.3 (7.0)
	8	12.3 (7.6)	17.5 (10.8)	18.3 (11.4)
R	1	0.9 (0.6)	1.3 (0.8)	1.4 (0.9)
	2	4.1 (2.5)	5.9 (3.7)	6.2 (3.9)

01000 C 080181

PREDELIVERY

Toe-in 3 to 9 mm (1/8 - 3/8 in.)

ENGINE SPEEDS

Slow Idle 800 rpm
 650 Fast Idle 2800 rpm
 750 Fast Idle 2600 rpm
 650 at Full Load 2600 rpm
 750 at Full Load 2400 rpm

CLUTCH PEDAL FREE TRAVEL

650 Tractor 16 mm (5/8 in.)
 750 Tractor 22 mm (7/8 in.)
 Fan Belt Tension 13 mm (1/2 in.)
 98 N (22 lbs.) force
 Battery Specific Gravity 1.260 at 27°C (80°F)

TORQUES

650 Front and Rear Wheel Bolts 133 N.m (98 ft-lbs)
 750 Front Wheel Bolts 133 N.m (98 ft-lbs)
 750 Rear Wheel Bolts 186 N.m (137 ft-lbs)

01023 D 080181

GENERAL TRACTOR SPECIFICATIONS—Continued

TUNE-UP

PTO Horsepower	
650 Tractor at 2600 rpm	10.8 kW(14.5 hp)
750 Tractor at 2409 rpm	13.4 kW(18.0 hp)
Compression	3914-4403 kPa (39.0-44.0 bar) (568-639 psi)
Thermostat Opening Temperature	71°C (160°F)
Radiator Cap Pressure Release	98 kPa (1.0 bar) (14 psi)
650 Engine Speeds	
Slow Idle	800 rpm
Fast Idle	2800 rpm
Rated Speed at Full Load	2600 rpm
750 Engine Speeds	
Slow Idle	800 rpm
Fast Idle	2600 rpm
Rated Speed at Full Load	2400 rpm
Injection Pump Timing	TDC
Battery Specific Gravity	1.260 at 27°C (80°F)
Front Wheel Toe-In	3-9 mm (1/8 - 3/8 in.)

LUBRICATION

Engine Crankcase Oil Capacity (with filter change)	2.5 L (2.6 U.S. qt.)
Transmission-Hydraulic System Capacity	
650 Tractor	13 L (14 U.S. qt.)
750 Tractor	14 L (15 U.S. qt.)
Front Wheel Drive Axle Housing	
650 Tractor	3.0 L (3.2 U.S. qt.)
750 Tractor	6.5 L (6.9 U.S. qt.)
Service Intervals	
Check Engine Oil Level	Every 10 hours
Change Engine Oil	After first 50 hours and again at 100 hours and then every 200 hours
Replace Engine Oil Filter	Every 200 hours
Clean Crankcase Breather Tube	Every 600 hours
Check Transmission-Hydraulic Oil Level	Every 50 hours
Change Transmission-Hydraulic Oil	
Without Hydraulic Filter	Every 200 hours
With Hydraulic Filter	Every 600 hours
Clean Transmission-Hydraulic Oil Screen	
Without Hydraulic Filter	Every 200 hours
With Hydraulic Filter	Every 600 hours
Replace Transmission-Hydraulic Oil Screen	
Without Hydraulic Filter	Every 600 hours
With Hydraulic Filter	Every 1200 hours
Replace Transmission-Hydraulic Oil Filter	After first 100 hours then every 200 hours
Check Oil Level MFWD Axle	Every 50 hours
Change Oil in MFWD Axle	After first 100 hours then every 600 hours

01000 P 080181

Specifications and Special Tools

LUBRICATION

Clean and Repack Front Wheel Bearings	Every 600 hours
Lubricate Grease Fittings	
Front Axle Pivot Pin	Every 10 hours
Drag Link Ends	Every 10 hours
Tie Rod Ends	Every 10 hours
Clutch and Brake Pedal Fittings	Every 50 hours
Right-Hand Hitch Lift Link	Every 50 hours
Steering Spindles (without MFWD)	Every 50 hours

SEPARATION

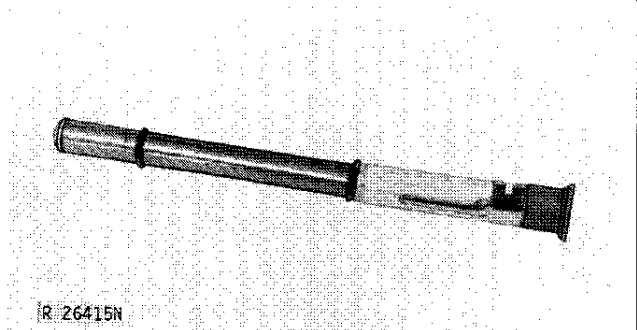
Fan Belt Deflection (at 98 N (22 lbs.) force)	13 mm (1/2 in.)
ROLL-GARD Protection Structure Cap Screws	
Rear	100 N.m (74 ft-lbs)
Side	245 N.m (181 ft-lbs)
Fender-to-Axle Housing	90 N.m (65 ft-lbs)
Fender-to-Step	30 N.m (22 ft-lbs)
Step-to-Transmission Case	50 N.m (36 ft-lbs)
Axle Housing-to-Transmission Case	50 N.m (36 ft-lbs)
Drag Link-to-Pitman Arm	50 N.m (36 ft-lbs)
Clutch Housing-to-Transmission Case	120-150 N.m (87-108 ft-lbs)
Clutch Housing-to-Engine	90 N.m (65 ft-lbs)
Side Frames-to-Engine	90 N.m (65 ft-lbs)
Hydraulic Lines-to-Pump	8 N.m (5.8 ft-lbs)

01000 F 080181

SPECIAL TOOLS

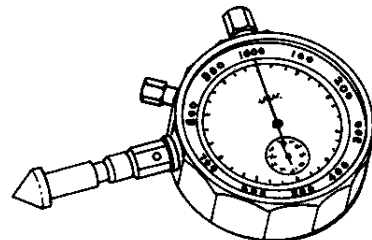
NOTE: Order tools from your Service-Gard Catalog, unless otherwise indicated.

JDST-28 Belt Tensioning Tool is used for checking fan belt tension.



R26415 N 01600 G 080181

Hand Tachometer is used for checking engine speed.



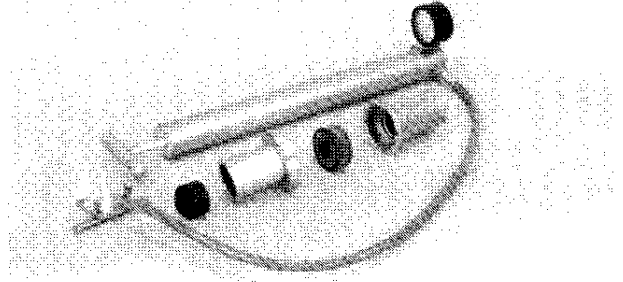
R 30607

Continued

R30607 01000 H 080181

Specifications and Special Tools

D-05104ST Radiator Tester is used for pressure testing cooling system and radiator caps.



A14;T75866 U03;01000 I 260784

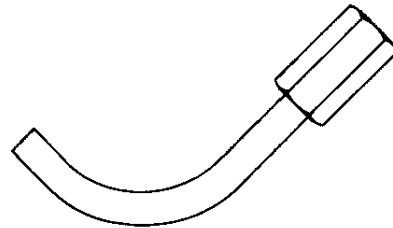
AR62377 Dry Element Cleaning Gun is used for cleaning air filter.



R37187N

A14;R27167 N U03;01000 J 060181

JDF-14 Timing Fixture is used for checking pump beginning of injection timing on engine.



R 30234

A14;R30234 U03;01000 K 080181

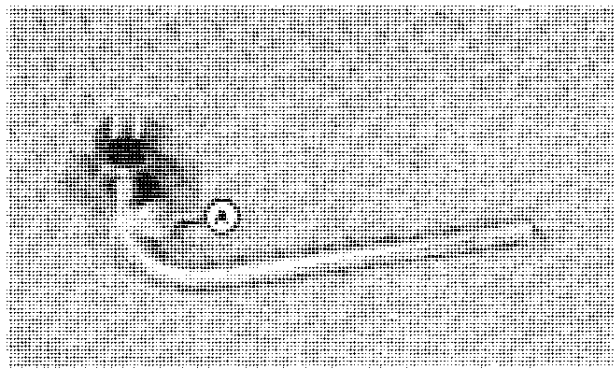
INJECTION PUMP TIMING TOOL

NOTE: Two injection pump timing tools can be made from one CH18358 Injection Line.

Obtain from dealer stock:

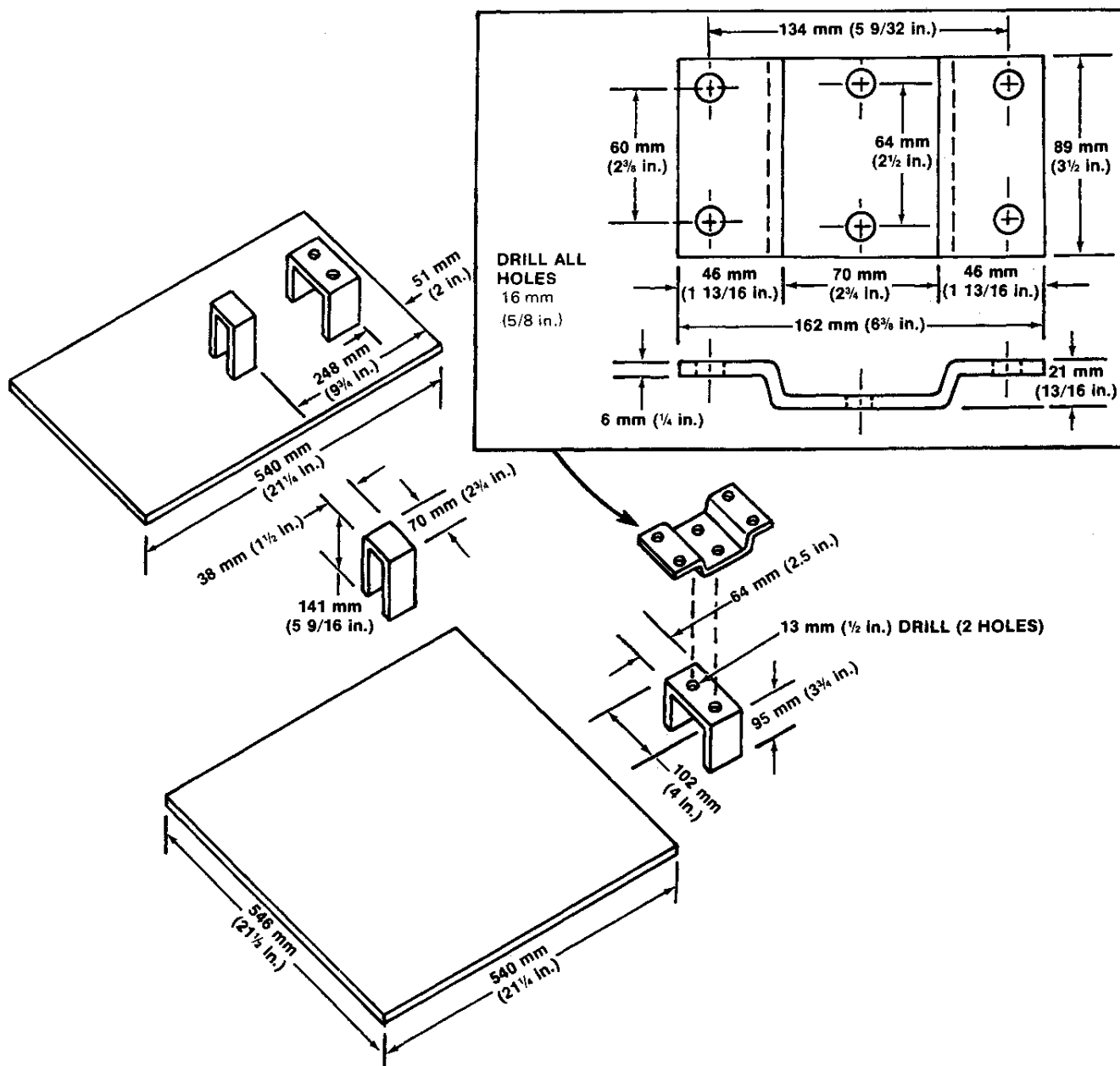
- 1—CH18358 Injection Line
- 2—H77628 Band

Cut injection line, on straight portion of line, approximately 133 mm (5-1/4 in.) from each end. Install band (A) around injection line to prevent loss of nut.



A23;RW10178 U07;23000 D 260484

Specifications and Special Tools



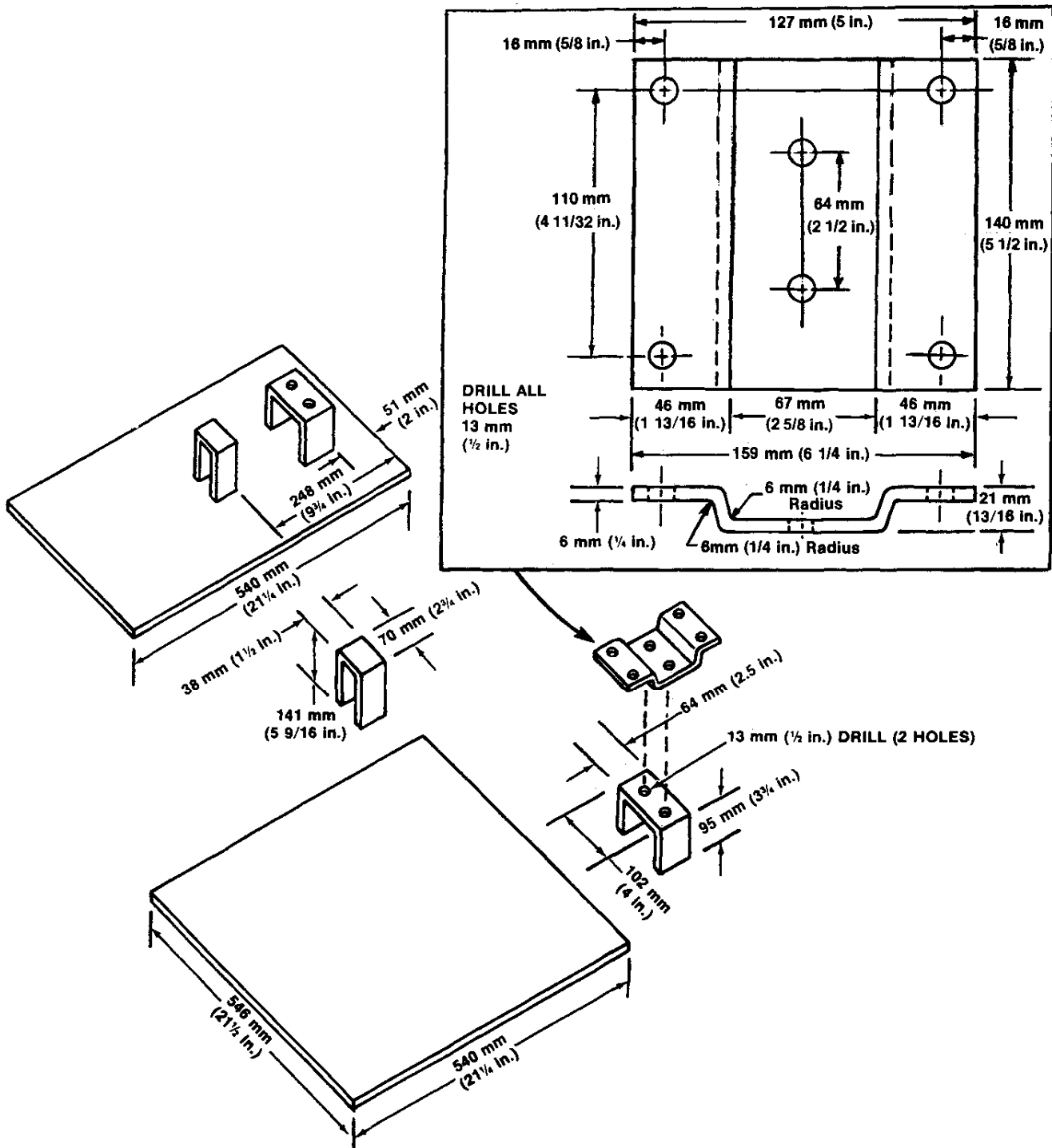
650 Transmission Disassembly Stand is used for supporting transmission and differential.

NOTE: Make sure all joints are welded properly.

Continued

RW1270 01000 1 080181

SPECIAL TOOLS—Continued



750 Transmission Disassembly Stand is used for supporting transmission and differential cases.

NOTE: Make sure all joints are welded properly.

RW1508 01000 M 080181

PREDELIVERY, DELIVERY AND AFTER-SALE SERVICES**PREDELIVERY SERVICE - GENERAL INFORMATION**

The John Deere delivery receipt, when properly filled out and signed by the dealer and customer, verifies that predelivery and delivery services were satisfactorily performed. When delivering the tractor, give the customer his copy of the delivery receipt and operators manual. Be sure to explain their purposes to him.

Because of the shipping factors involved, plus extra finishing touches necessary to promote customer satisfaction, there are certain predelivery services that must be performed by the dealer. These services are listed in the first of two sections on the predelivery form which is attached to the tractor. The second section is a list of factory inspections that must be verified by the dealer.

Fill the form in completely and sign it. Send a copy to the factory and file the original with the shop order for the job. This will certify that the proper predelivery service has been completed.

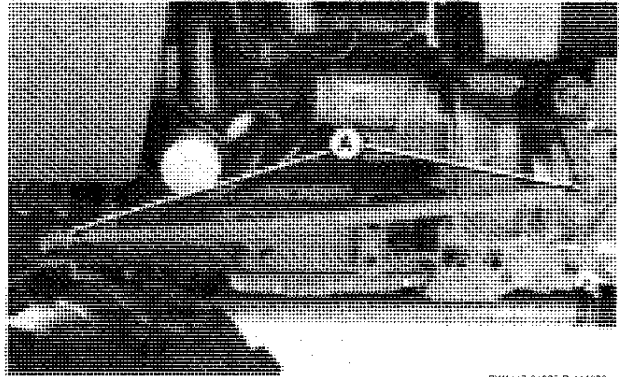
DEALER PREDELIVERY SERVICE

Using the following illustrated procedures, perform all services listed and check each job off as it is completed.

A14 U03.01005 A 111280

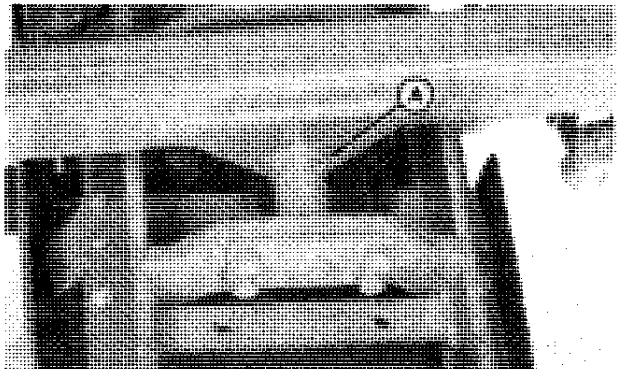
LUBRICATE GREASE FITTINGS

1. Lubricate drag link ends (A) with several shots of grease.



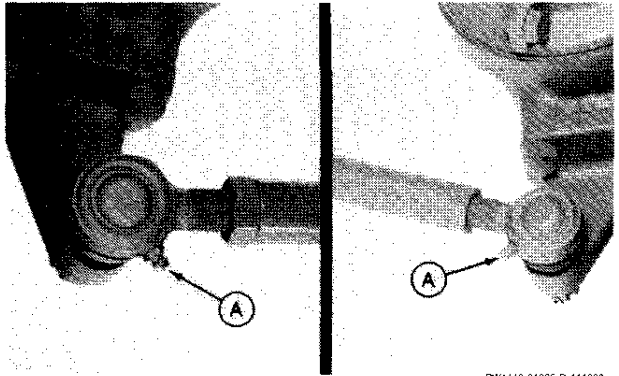
RW1117 01005 B 111280

2. Lubricate front axle pivot pin (A) on tractors without front-wheel drive, with several shots of grease.



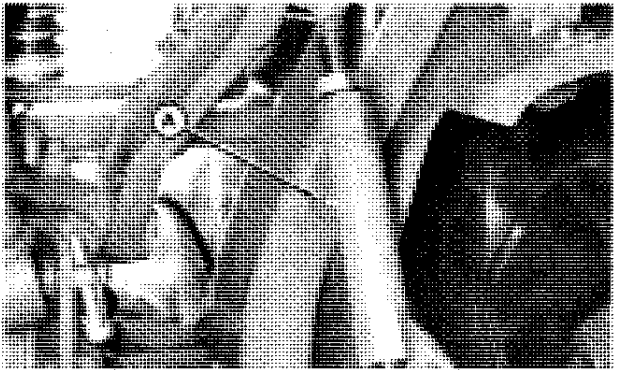
RW1110 01005 C 111280

3. Lubricate tie rod ends (A) with several shots of grease.



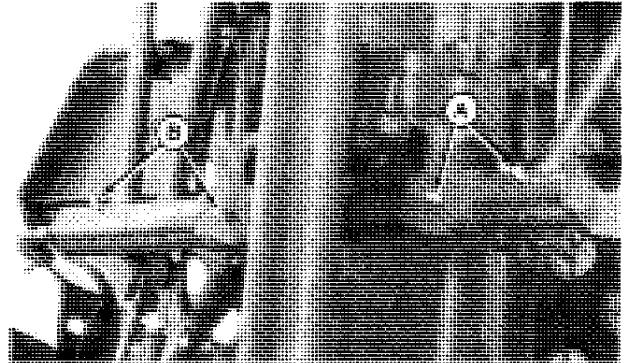
RW1113 01005 D 111280

4. Lubricate right-hand hitch lift link (A) with several shots of grease.



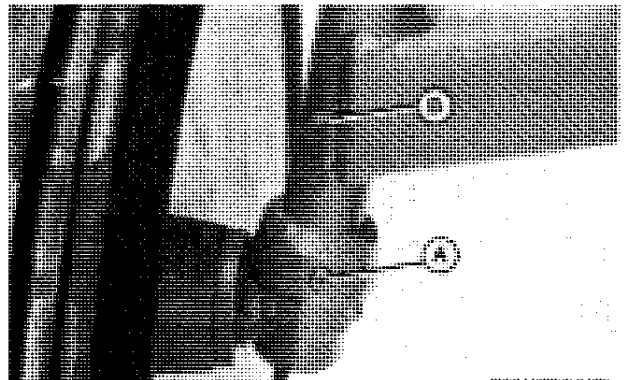
RW1107 01005 E 111280

5. Lubricate clutch pedal (A) and brake pedal (B) with several shots of grease.



RW1115 01005 F 111280

6. Lubricate steering spindles on tractors without MFWD. Remove relief plugs (A) and apply several shots of grease to steering spindle fittings (B). Reinstall relief plugs.



DEAR YOUR OPERATOR'S MANUAL

ALIGN MUFFLER

1. Make sure muffler extension pipe is perpendicular to the tractor hood.

01005 H 111280

ADJUST ALL LAMPS

1. Check operation of lamps in all switch positions.

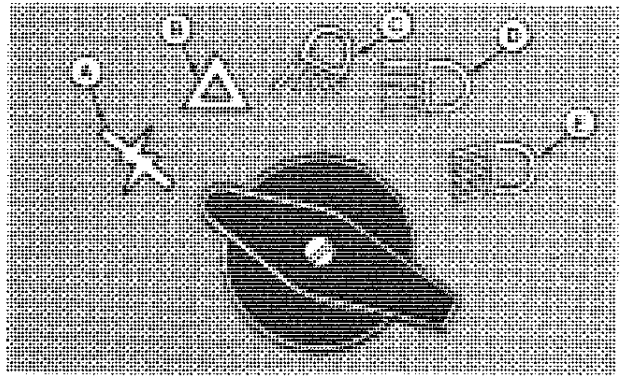
(A)—Turns off all lamps.

(B)—Turns on warning lamps. Use for daytime highway driving only.

(C)—Turns on bright head lamps and rear flood lamp. For field use only. Do not use on roads. Flood lamp might blind or confuse other drivers.

(D)—Turns on bright head lamps, tail lamps, and warning lamps. For highway driving during daytime or night-time.

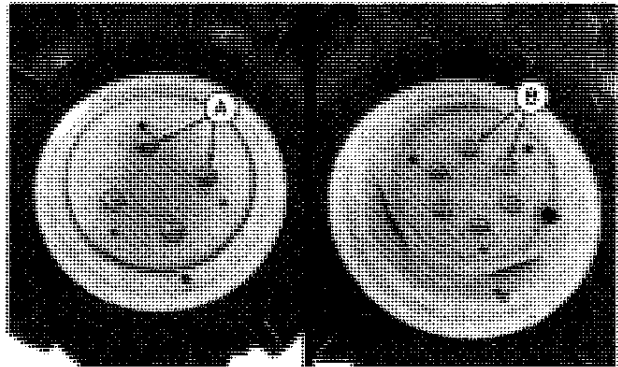
(E)—Turns on dim head lamps, tail lamp, and warning lamps.



RW380 01005 J 111280

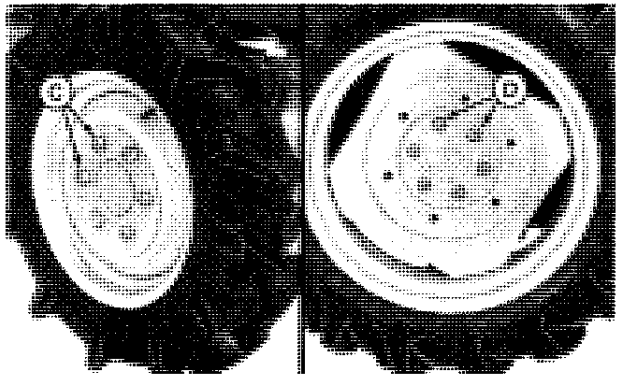
TORQUE WHEEL HARDWARE

1. Torque 650 tractor front (A) and rear (B) wheel bolts to 133 N.m (98 ft-lbs).



RW367 01005 J 111280

2. Torque 750 tractor wheel bolts (C) to 133 N.m (98 ft-lbs) and rear wheel bolts (D) to 186 N.m (137 ft-lbs).



RW367 01005 J 111280